



**market
info**

EXTRA



Valued

LET'S GO



Copilot

Your everyday AI companion



Microsoft have just held a Surface event announcing new hardware and it's vision for AI with Copilot launching in the next Windows 11 update. This event was not hosted by Chief Product Officer Panos Panay who has been the lead on the Surface product lineup for many years, and many would say the individual responsible for it's success. In a surprise announcement a few days back he is leaving Microsoft for Amazon where is going to be overseeing Amazon's product range. The departure has been quite abrupt with him just a month

ago tweeting that he was excited to appear at the next Surface event. Could Amazon be planning to enter the laptop market? Maybe, maybe not, but he will be replaced by Yusuf Mehdi who is currently Microsoft's Consumer Marketing Head.

Copilot launches on Windows 11s next update, which is due on the 26th September. It will be available anywhere in Windows on the Taskbar or with a Win + C keyboard shortcut. Demonstrated were simple requests to 'focus' with Copilot suggesting a Spotify playlist, or requesting Copilot to turn on Dark mode or neatly organise windows. Users will

also be able to request it to summarise a piece of text making it easier to read and get to important information for a TL;DR or executive summary treatment for long pieces. Copilot will also help users to create by writing pieces of content with simple prompts. It will also do simple image manipulation like removing backgrounds, making basic adjustments or resizing and upscaling before posting to social media.

The initial launch of Copilot is across the Windows OS with integration into Bing, Edge and Microsoft 365 coming later this year.



M

icrosoft's Go range of laptops has been well received and they announced their latest model at this year's event.

The latest model looks largely the same as the previous model coming in four colours: Sandstone, Sage, Ice Blue and Platinum. The PixelSense Touchscreen display's resolution is still a rather low 1536x1024 in a familiar 3:2 ratio. This is low by today's standards and is pretty poor given the price point of these laptops, starting at a not so budget £799.00/AU\$1,429.00 for the model with 8GB RAM, or £999.00/AU\$1,729.00 for the model that comes with 16GB of RAM. The display is protected by Corning Gorilla Glass 3. Both come with a 256GB SSD but

users can swap in a larger drive if they want to, however Microsoft warn that this needs to be carried out by "Authorised technicians following Microsoft provided instructions". This is a shame as users used to be able to do this sort of thing on laptops years ago. Fingers crossed in subsequent models this will be loosened as right to repair gains momentum and manufacturers adjust their devices accordingly.

Powering the new Go 3 Laptop are 12th Gen Intel i5-1235U processors with Intel Iris Xe graphics. The new chip supposedly makes the new laptop 88% faster! Connectivity remains the same as the previous model with the same (awkward) Surface Connect port on the right side, one USB-A (3.1) port and a USB-C

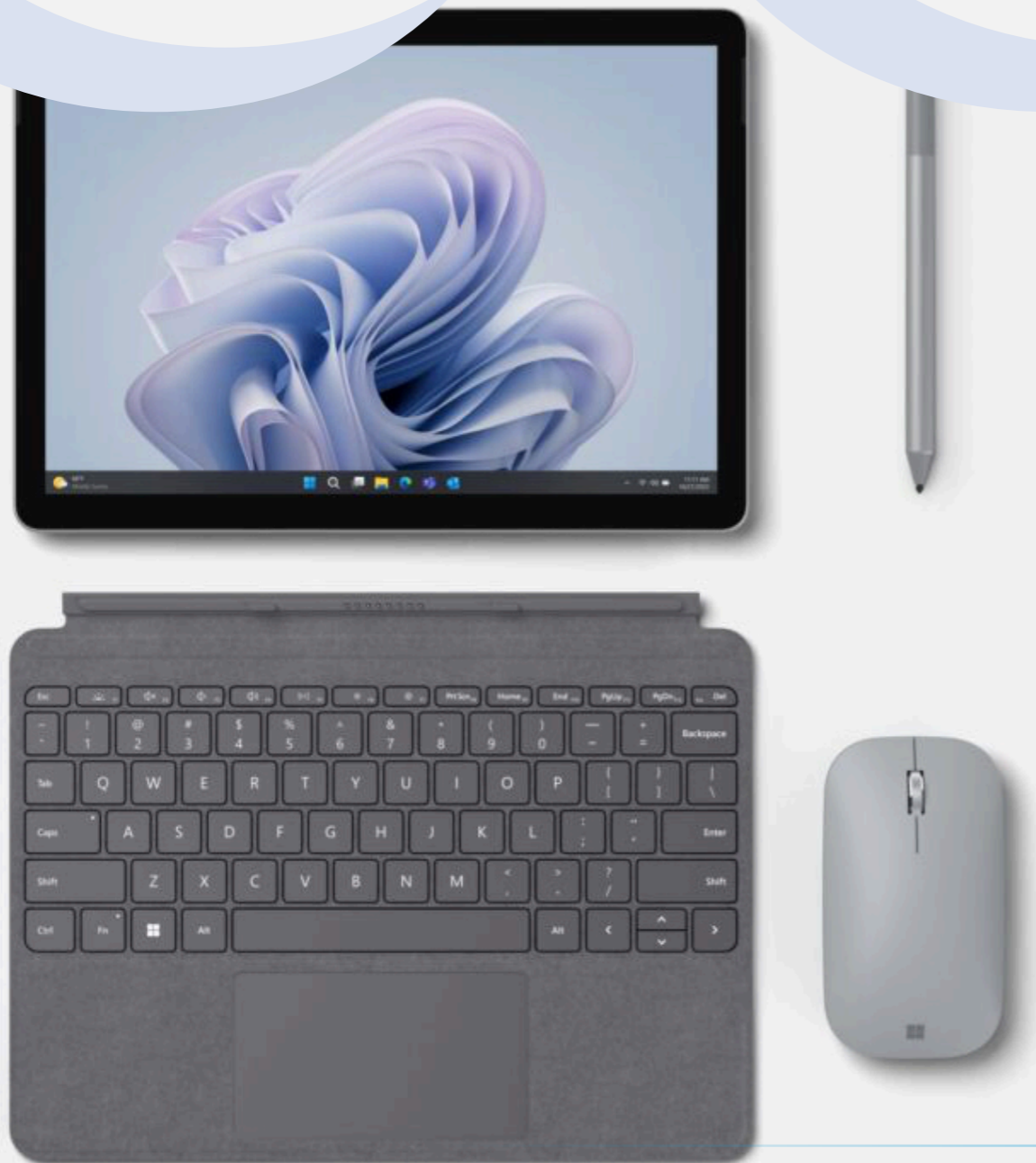
(3.2) port and headphone jack on the left side. There is also a fingerprint reader built-in to the power button.

Also featured is a 720p HD webcam accompanied by dual far-field microphones with Voice Clarity and Omnisonic speakers with Dolby Audio Premium so video calls and conferencing should be competent.

The new Surface Go 3 Laptop can be ordered now and will launch early October.



GO 4



Not announced at the actual event but in a press release instead was a much needed update to the Surface Go. However, this model will not be sold to consumers, and instead is aimed at businesses and frontline workers.

Gone is the dual-core Pentium processor, which is replaced by a new four-core N200 chip which are based on 12th and 13th Gen CPU architecture and their E-cores. These should ensure the new system is fast enough to handle everyday tasks with ease. The onboard RAM has also been doubled to 8GB LPDDR5.

The 10.5-inch display features a resolution of 1920x1280 which to me makes the lower resolution display on Laptop Go 3 all the more strange.

There is a USB-C (3.1) port, headphone jack, and microSD, with the Surface Connect port. There are two 1080P cameras which are accompanied by dual far-field mics with Voice Clarity and a 2w stereo system with Dolby Audio Premium which gives this the edge over the Laptop Go 3 for video calls.

Because the Surface Go 4 is aimed at business it comes with a suite of security features: Chip-to-cloud security with secure sign-in by an NFC badge; Windows Hello with facial recognition; a secure PIN or multi-factor authorisation. IT dept's will be able to deploy and manage from anywhere via the cloud down to the firmware layer.

The Surface Go 4 is available for businesses to purchase now. Pricing is expected to be around £500/AU\$775.

The other major announcement of the event was the introduction of the Surface Laptop Studio 2. On the

outside not much has changed with the laptop featuring the same folding design as before. Internally there are some significant upgrades that should make this a powerhouse for years to come.

Powering the new laptops are the Intel's 13th Gen i7 H processors. Built-in to this chip is an NPU chip also built by Intel. The chip is the Intel Gen 3 Movidius 3700VC AI accelerator. There was nothing demoed that highlighted the benefits of this AI acceleration, but with Windows 11 featuring the new Copilot feature, and even more AI features rumoured to be arriving in Windows 12, this is not likely to go to waste.

The base model comes with Intel Iris Xe graphics which will be fine, but creators will likely want to upgrade to either the NVIDIA RTX4050 with its 6GB GDDR6 vRAM or RTX4060 8GB GDDR6 vRAM. These are powerful cards which can play the latest games and will also aid in running video editing and photo editing apps. The Studio 2 can also be configured with the NVIDIA RTX2000 ADA Generation GPU; a professional Gpu designed for professional workflows as opposed to gaming. Unfortunately, this option only comes on the highest configuration that features a 1TB SSD. This

combination of the latest Intel processors and NVIDIA graphics have Microsoft claiming a 2x performance increase over the first Surface Laptop Studio .

The 14.4-inch PixelSense Flow display is impressive with a 2400x1600 resolution for 200PPI with a 120Hz refresh rate. It is VESA Display400HDR certified with DolbyVision IQ support. It also supports 10-point multi-touch and is protected by Corning Gorilla Glass 5. Above the display is a 1080p wide FOV webcam with Windows Hello 2.0 face authentication and this is paired with dual studio mics with Voice Clarity and Quad Omnisonic speakers with Dolby Atmos.

The Surface Laptop Studio 2 features 2x USB-C supporting both USB4 and Thunderbolt 4, 1x USB-A 3.1 port, a 3.5mm headphone jack and a microSDXC port. Oh, let's not forget about the Surface Connect Port. Finally, the Surface Laptop Studio 2 features Surface Slim Pen 2 compatibility as well as integrated storage and charging under the keyboard.

The Surface Laptop Studio 2 is available to pre-order now starting at £2,069.00/ AU\$3,519.00 although the model with that can be configured with NVIDIA RTX2000 does not appear as a purchasable option in Australia at this time.



Image source: @rquandt & WinFuture



Of interest to businesses, Microsoft also announced two new Surface Hub 3s which come in at 50-inch and 85-inch screen sizes.

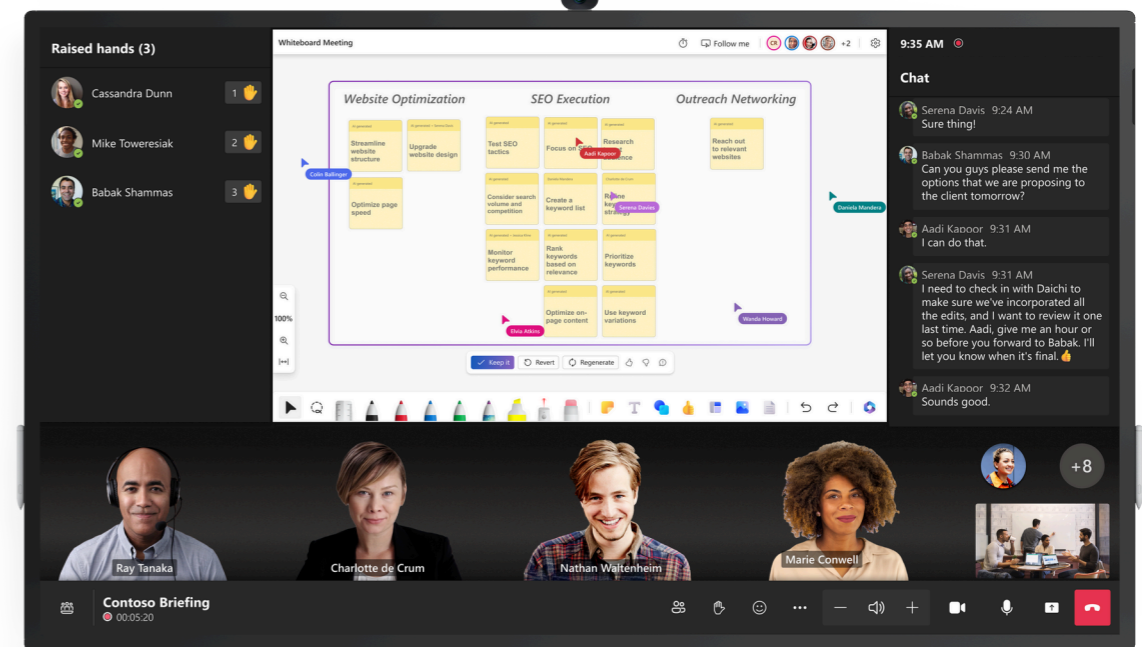
Immediately obvious is the new Hub 3s capability to rotate to a vertical portrait orientation. There's a high resolution 4K PixelSense display, which features an anti-glare coating as standard, and there's 20 points of multi-touch with built-in palm rejection. The Hub 3 supports two surface Hub pens at the same time and even supports Surface Slim Pen 2. This allows two presenters to share the screen and add content at the

same time for even more immersive collaboration than was possible than before. There's a dual microphone array and sound intelligently adjusts using the Smart AV feature when switching between landscape and portrait views providing the best stereo sound regardless of orientation.

Microsoft have taken onboard feedback from existing Surface Hub users so features like persistent Chat and the Front Row layout which places the content at the front and centre of the screen have been added. Also from now on, new Teams features will be added to Surface Hub on day 1 of their release.

Surface Hub 3 also performs better than the last generation with a 60% increase in CPU performance and a massive 160% GPU performance increase on the previous generation.

The Surface Hub 3 is available to order now starting at AU\$16,349.00 for the 50-inch model and AU\$43,249.00 for the 85-inch model. They come with one Surface Hub camera and the 85-inch comes with two Surface Hub pens, whilst the 50-inch comes with just one. Currently, there is no official UK pricing but I suspect they will sit around the same costs as the Hub 2S at £8,999.99 and £21,499.00 respectively.



The new front row feature in action